

Contents

Introduction	1
Overview	2
Display	2
Alarms	6
Data Logging	7
Other Functions	12
Measurement Inputs	13
Auxiliary Outputs	18
Communications Overview	19
ECU Connection	19
Telemetry	20
Lap Beacon	20
Options	20
Software	21
Field Updateable Control Software	22
CAN Cable	22
Installation	23
Mounting	23
Display Care	24
Wiring	24
MoTeC Supplied Wiring Loom	25
Custom Wiring Loom	25
External Buttons	25
External Lights	26
Thermocouples	26
Connecting to a MoTeC ECU	26
Telemetry	28
Dash Manager Software	29
Introduction	29
Computer Requirements	29
Installing Dash Manager	30
Mouse & Keyboard	31
Main Menu	31
Button Bar (Toolbar)	32
On line / Off line	32
Configuration	32
Configuration Files	32
Changing the Configuration	34
Versions and Updating	35

Channels.....	37
Conditions Overview	41
Checking Operation	42
Sensor Zeroing	43
Details Editor	43

Windows Keyboard Use 45

Main Menu	45
Closing a Window	45
Getting Help	45
Selecting an Item in a Window	46
Using the Selected Item	46

Appendices..... 51

Appendix A: General Specifications	51
Appendix B: Options Summary	52
Appendix C: Dash Manager Command Line	54
Appendix D: Input Characteristics	56
Appendix E: Auxiliary Output Characteristics	62
Appendix F: CAN Bus Specification	63
Appendix G: CAN Wiring - Multiple Device	64
Appendix H: CAN Wiring - Single Device	65
Appendix J: ECU to ADL Wiring (RS232)	66
Appendix K: Pin List by Function	69
Appendix L: Pin List by Pin Number	73
Appendix M: Connector	75
Appendix N: Wire Specifications	76
Appendix P: Case Dimensions.....	77

© Copyright – Motec Pty Ltd – 1998-2003

The information in this document is subject to change without notice.

While every effort is taken to ensure correctness, no responsibility will be taken for the consequences of any inaccuracies or omissions in this manual.

23 June, 2003

Introduction

Thank you for purchasing a **MoTeC** ADL Dash / Logger.

In this Manual

This manual covers:

- Overview of the ADL's capabilities
- ADL installation
- Overview of the **MoTeC** Dash Manager software

Software Information

For detailed information on using the various software programs refer to the online help supplied with the program.

Other Manuals

Separate Manuals are available for:

- **MoTeC** Lap Beacon / BR2
- Data Logging Analysis

Sensor Details

Drawings are available for all **MoTeC** sensors. The drawings detail all mounting and wiring requirements for each sensor.

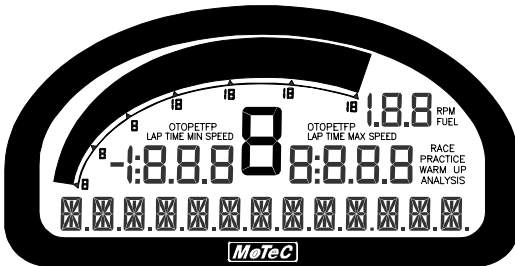
Overview

The **MoTeC** ADL Dash / Logger is a combined LCD dash unit and high performance data logger.

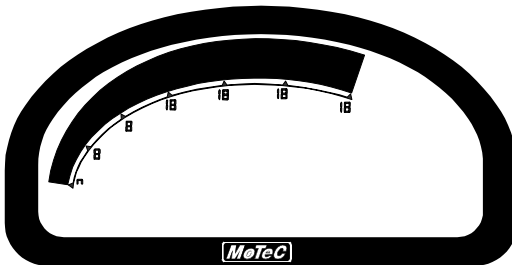
Display

The ADL display is a high contrast, high temperature, custom made LCD display.

The display contains a Bar Graph, three Numeric Displays, a Centre Numeric Display and a Bottom Alpha / Numeric Display.



Bar Graph

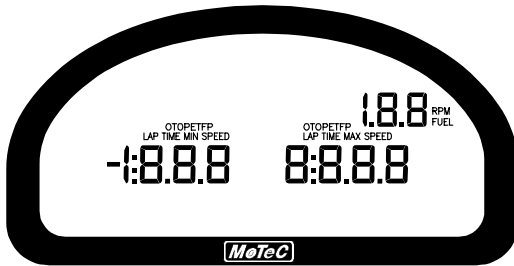


The 70 segment bar graph has a user definable range and is typically used as a tacho, however it can be used to display any other value. When used as a tacho it may be configured for up to 19,000 RPM.

A fully programmable shift point can be displayed, which can also be gear dependent.

The operation of the bar graph can be different for each of the display modes (Race Practice and Warmup), this allows a lower range to be used in Warmup mode.

Numeric Displays



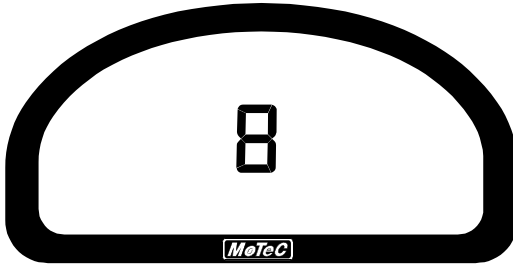
The three numeric displays (Left, Right and Top Right) can be programmed to display any value, which may be different for each of the display modes (Race Practice and Warmup).

Note that each of the three numeric displays has a different number of digits and are therefore suited to displaying different values. For example the Top Right display can only show values up to a maximum of 199 and is therefore not suitable for displaying Lap Times, but is suitable for displaying many other values such as Lap Number of Fuel Remaining, Engine Temperature etc.

The numeric displays can show any channel value plus up to two override values, which are shown each time their value is updated, this is useful for values that are updated periodically, for example Lap Time. The override values are shown for a programmable period of time, for example a numeric display could normally show the Running Lap Time (which is continuously updating) then be overwritten by the Lap Time for 10 seconds each time the Lap Time is updated.

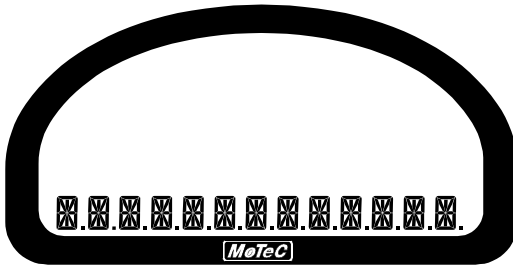
Enunciators for some of the common display values are provided above the numeric displays, eg. ET (Engine Temperature), OP (Oil Pressure).

Centre Numeric Display



The Centre Numeric display is incorporated to show the current gear but may be used for other purposes.

Bottom Display



The 13 digit alpha numeric display can display up to 20 lines of information that can be scrolled up or down using the external buttons. Each of the 20 lines can display up to 3 channel values at a time.

The values shown may be different for each of the three display modes.

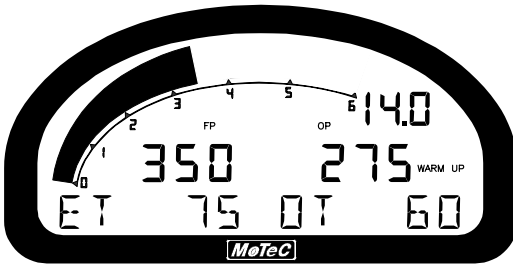
Additionally the bottom display can show up to four override values, similar to the numeric displays.

The bottom display will also show any active alarm messages, which will override all other values until the alarm is cleared.

Display Modes

The display has three main modes of operation, Race, Practice and Warm Up.

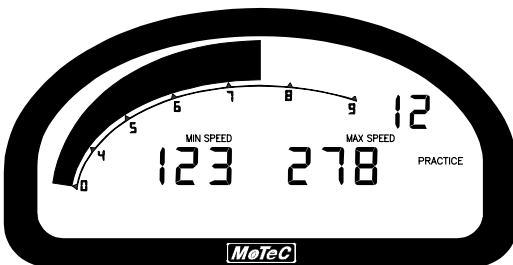
Warm Up



The warm up display is used to display important engine sensor readings during engine warm up, eg, RPM, Battery Voltage, Engine Temperature, Oil Pressure, Oil Temperature & Fuel Pressure.

The bottom display may be used display many other values that may need checking during warm up.

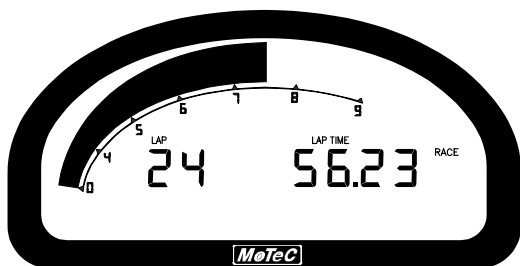
Practice



The practice display is used to display basic information, plus information to help the driver improve lap times, eg. Lap Time, Lap / Gain Loss, Maximum Straight Speed, Minimum Corner Speed or Corner Exit Speed.

The bottom display may be used to display additional information as needed.

Race



The race display is normally used to display minimal information, eg RPM, Lap Time, Fuel Remaining or Laps Remaining.

The bottom display may be used to display additional information as needed.

Display Formatting

Units

The display units can be changed to suit the driver, for example the driver may prefer to see the engine temperature in Fahrenheit rather Celsius. This is independent of the units used for other purposes.

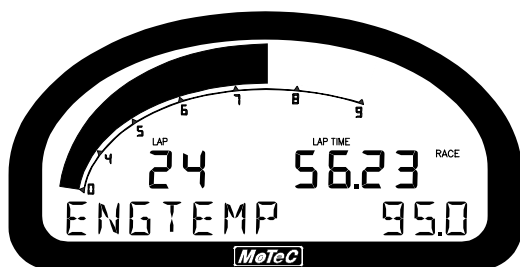
Decimal Places

The number of decimal places can be reduced for display purposes, for example the engine temperature is measured to 0.1 °C but is better displayed with no decimal places. This is normally done automatically.

Alarms

When an alarm is activated a message is shown on the bottom line of the display, a warning light can also be activated which is recommended to draw the drivers attention to the display.

The message displayed can be defined and can also include the current sensor reading or the sensor reading when the alarm was triggered.



The alarms remain active until they are acknowledged, either by a driver activated switch or automatically after a defined period of time.

The warning alarm limits are fully programmable and may include up to 6 comparisons to ensure that the alarms are only activated at the correct time. For example, an engine temperature alarm may activate at 95 °C if the ground speed has been above 50 km/h for 30 seconds. The speed comparison avoids the alarm showing during a pit stop due to heat soak. Additionally another comparison could be set at a higher temperature to cover all other situations.

The comparison values can be automatically incremented or (decremented) when an alarm occurs. For example the engine temperature alarm may be set at 95°C with an increment of 5°C, so that the second time the alarm activates it activates at 100°C. A limit may be set on the number of times the comparison value is allowed to increment, also it may return to its original value after a period of time, in case the alarm condition was temporary.

The alarms can also be dependent on the current display mode (Race, Practice or Warmup)

Data Logging

Data logging allows the sensor readings (or any calculated value) to be stored in the ADL for later analysis on a Personal Computer.

Logging Memory

The ADL comes with 8 Mbytes of logging memory. Various options determine how much of the memory can be used and whether Fastest Lap Logging and Burst Logging are enabled.

See the Options Summary in the Appendices for details.

Power

The ADL power can be turned off at any time without losing the logged data. The ADL uses FLASH memory which does not require an internal battery to keep it alive.

Logging Rate

The ADL can store any value at up to 1000 times per second, which can be individually set for each logged item.

The rate at which the values are logged is very important – the value must be logged fast enough to record all variations in the reading. If the value is logged too slowly then the readings can be totally meaningless. For example suspension position normally needs to be logged at 100 times per second or more.

Note, however, that if a value is logged faster than necessary it will not improve the accuracy of the logged data, it will just reduce the total logging time available. For example, the engine temperature only needs to be logged at once per second.

Update Rate

Not all values are updated 1000 times per second, and logging them faster than their update rate will simply waste memory.

The update rates for all input types are listed below:

Input Type	Update Rate (times per second)
Analog Voltage Inputs 1 to 4 & 11 to 14	1000
Other Analog Voltage Inputs	500
Analog Temp Inputs	500
Lambda Inputs	100
Digital Inputs & Speed Inputs	100
RS232 & CAN Communications	50 max *

* Note that the RS232 & CAN Communications update depends on how frequently the data is sent from the device. Typically the update rate from an M4, M48, M8 or M800 ECU is about 20 times per second using RS232, and about 50 times per second for the M800 using CAN.

Logging Time

The maximum logging time is dependent on the logging memory size, the number of items logged and the rate at which they are logged. The configuration software will report the logging time, taking all these factors into account.

Logging Types

The ADL provides three ways of logging the data: Normal Logging, Fastest Lap Logging and Burst Logging.

Normal Logging

Normal Logging continuously logs data to memory whenever the Start Condition is true (and the Stop Condition is false).

Logging Rates

The logging Rate may be individually set for each value between 1 to 1000 times per second.

Start and Stop Logging Conditions

To avoid logging unnecessary data, logging can be started and stopped by user definable conditions. For example logging might start when the vehicle exceeds 50 km/h, and stop when the engine RPM is below 500 RPM for 10 seconds. Note that the Start Condition must be true and the Stop Condition must be false before logging will start.

Memory Filling Options

When the logging memory is full the ADL may be configured to either stop logging, or to overwrite the oldest data, which ensures that the most recent data is always available. This is referred to as cyclic logging.

For most applications it is recommended that cyclic logging is used.

Logging Setup Files

The logging list can be saved and loaded from a file. This allows multiple logging setups to be used.

Fastest Lap Logging

Fastest Lap logging records data for the Fastest Lap since the data was last retrieved. Normally this is used for items that require fast logging rates, such as suspension position. This allows the available memory is used more efficiently.

Note that Fastest Lap Logging requires that a Lap Beacon is connected.

Fastest Lap Logging is in addition to and works concurrently with Normal Logging.

Up to 50 values may be logged.

Logging Rates

The logging Rate may be individually set for each value between 1 to 1000 times per second.

Maximum Lap Time

Note that a maximum Lap Time must be entered which indicates to the ADL how much memory to reserve for fastest lap logging. If there are no Lap Times less than this value then Fastest Lap data will not be available.

Memory Occupied

The amount of memory occupied by Fastest Lap logging depends on how many items are logged, how fast they are logged and the specified maximum Lap Time. The effect on normal logging time is shown in the configuration software.

Logging Setup Files

The logging list can be saved and loaded from a file. This allows multiple logging setups to be used.

Burst Logging

Burst logging allows data to be captured at high speed without wasting large amounts of memory.

Two independent burst logging systems are available.

Up to 20 values may be logged for each.

Logging Rates

The logging rate may be set between 100 and 1000 times per second and is the same for all logged items.

Trigger Conditions

Burst logging is triggered when a defined condition becomes true.

Note that the normal Start and Stop Logging conditions do not affect burst logging.

Trigger Position

Burst logging can capture data before and/or after the burst start condition becomes true (trigger event). This is because the burst logging data is stored continuously, overwriting the oldest data as necessary. When the trigger event occurs, a proportion of the old data (before the trigger event) is kept and the rest of the memory is filled with new data (after the trigger event).

Events and Memory

Up to 8 events can be captured for each of the two burst systems. Each burst event occupies 64 kbytes of memory ($1/16^{\text{th}}$ of a Mbyte).

The number of events may be set by the user. Note that this will affect the amount of memory available for normal logging.

Logging Time

Since each burst event is fixed at 64 kbytes of memory, the burst logging time is dependent on how many items are logged and how fast they are logged. The burst logging time is reported by the configuration software.

For example 8 items logged at 500 times per second will last 8.2 seconds.

Retrieving the Logged Data

A personal computer is used to unload the logged data from the ADL. The logged data is then stored on the computer hard disk.

The logged data may be retrieved at very high speed (approximately 20 seconds per Mbyte).

After each unload the user has the option to clear the logging memory.

The unload may be interrupted part way through if necessary by disconnecting the computer. The partial unload will contain the most recently

logged data and will be stored on the computer hard disk. In this case the ADL logging memory is not cleared and logging will continue as normal at the end of the existing data. Next time the logged data is unloaded both the new data and the previously partly unloaded data will be retrieved.

Track Map Sensor Requirements

In order for the logging analysis software to plot a track map the following sensors are required and must be logged.

- Lateral G force
- Wheel Speed
- Lap Beacon (Note that the 'Beacon' Channel must be logged)
- Longitudinal G force (Optional: See Below)

A Longitudinal G force sensor should be used if the vehicle has only one wheel speed sensor. This allows the analysis software to eliminate wheel lockups which is essential when creating or using a track map.

Other Functions

The ADL can perform many other functions and calculations including the following:

Functions:

- Shift Lights
- Engine Log

Calculations:

The ADL can calculate and display any of the following:

- Lap Time, Lap Speed, Running Lap Time, Split Lap Times, Lap Number, Laps Remaining.
- Ground Speed, Drive Speed, Wheel Slip, Lap Distance, Trip Distance, Odometer.
- Lap Time Gain / Loss continuously displays how far behind or ahead the vehicle is compared to a reference lap.
- Current Gear.

- Minimum Corner Speed, Maximum Straight Speed and other Min/Max values.
- Fuel Used, Fuel Usage, Fuel Remaining, Laps Remaining, Fuel Used per Lap.

General Purpose Calculations:

The ADL also provides a number of general purpose calculations including:

- 2D and 3D Lookup Tables
- User Defined Conditions
- General Purpose Timers
- Mathematics

The user defined conditions or tables can be used to activate items such as a Thermatic Fan or Gearbox Oil Pump.

Measurement Inputs

The ADL measurement inputs can be connected to a wide variety of sensors. This allows the ADL to measure vehicle parameters such as: Suspension Movement, Wheels Speeds, Steering Angle, Engine Temperature etc.

Input Types

The ADL has a number of different input types which are designed to suit the different types of sensors.

The following inputs are available:

- 20 Voltage Inputs
- 8 Temperature Inputs
- 2 Wide Band Air Fuel Ratio Inputs (Lambda Inputs)
- 4 Switch Inputs
- 4 Digital Inputs
- 4 Wheel Speed

Options

The number of inputs that can be used depends on which options are enabled. See the Options Summary in the Appendices for details.

Internal Sensors

The ADL also includes internal sensors for Battery Voltage and ADL Internal Temperature.

Sensors

Different types of sensors are available to suit different types of measurements.

Sensors convert a physical measurement (e.g. Pressure) into an electrical signal (e.g. Volts). Different types of sensors generate different types of electrical signals. For example most temperature sensors convert the temperature into a variable resistance signal which may be measured by the ADL Temperature inputs, however most wheel speed sensors generate a variable frequency signal which must be connected to either a Digital input or a Speed input.

Calibration

Calibration is the process of converting the electrical value, e.g. Volts into a number that represents the physical value, e.g. Temperature.

All inputs can be calibrated to suit the connected sensor.

The calibrations can be selected from a number of predefined calibrations provided by **MoTeC**, or they can be entered by the user.

Analog Voltage Inputs

The 20 Analog Voltage inputs are normally used to measure the signals from analog voltage type sensors, i.e. sensors with variable voltage outputs, such as:

- Rotary or linear potentiometers
- Signal conditioned 3 wire pressure sensors
- Thermocouple amplifiers
- Accelerometers

These inputs can also be used to measure two wire variable resistance sensors if an external pullup resistor is connected from the input to the 5V

sensor supply. Additionally, on/off switch signals may be connected, which may also require an external pullup resistor.

Options

Note that the number of inputs that are available depends on which options are enabled. See *Appendix B: Options Summary* for details.

Measurement Methods

These inputs can be configured to use several measurement methods to suit the various types of sensors:

- **Absolute Voltage:** The sensor voltage is independent of the sensor supply voltage
- **Ratiometric Voltage:** The sensor voltage is proportional to the 5V sensor supply voltage
- **Variable Resistance:** The sensor resistance can be entered directly.
- **On/Off :** The voltage for on and off can be defined

Input Voltage Range

The measurable input voltage range is 0 to 15 Volts. This allows selection from a wide range of sensors.

Specifications

For full specifications see *Appendix D: Input Characteristics*.

Analog Temp Inputs

The 8 Analog Temp inputs are identical to the Analog Voltage inputs, except that they contain a 1000 ohm resistor which is connected internally from the input pin to the 5V sensor supply. This allows the Analog Temp inputs to be used with two wire variable resistance sensors such as:

- Two wire thermistor temperature sensors
- Two wire variable resistance pressure sensors

Some voltage output sensors can also be used if they can drive the 1000 ohm resistor without causing an error in their reading (eg **MoTeC** Thermocouple Amplifier). Additionally, on/off switch signals may be connected.

Options

Note that the number of inputs that are available depends on which options are enabled. See *Appendix B: Options Summary* for details.

Measurement Methods

These inputs use the same measurement methods as the Analog Voltage Inputs.

Input Voltage Range

The measurable input voltage range is 0 to 15 Volts. This allows selection from a wide range of sensors.

Specifications

For full specifications see *Appendix D: Input Characteristics*.

Wide Band Lambda Inputs

The two high accuracy, fully temperature compensated Wide Band Air Fuel Ratio measurement inputs can be used if the Lambda Option is enabled.

These inputs connect directly to a **MotEC** 4 wire Wide Band Lambda Sensor and are accurate to 1.5% up to 1.2 Lambda under all load and temperature conditions.

Note that this is the Bosch LSM sensor and not the 5 wire Bosch LSU.

Note that NTK Lambda sensors should be connected to an Analog Voltage input via the appropriate amplifier.

Switch Inputs

The 4 switch inputs are generally used for the external switches required to operate the ADL display. They can also be connected to a brake switch or other switch.

These inputs have a 4700 ohm resistor connected internally from the input pin to the 5V sensor supply so that a switch can be simply connected between the input pin and 0 volts.

Options

All four inputs are available irrespective of which options are enabled.

Specifications

For full specifications see *Appendix D: Input Characteristics*.

Digital Inputs

The 4 digital inputs are identical to the switch inputs except that they include the following additional measurement methods:

- Frequency: The frequency of the input signal is measured
- Period: The time between successive pulses is measured
- Pulse width: The low time of the pulse is measured
- Count: Counts the number of pulses
- Beacon: For connection of a lap beacon

Options

Note that the number of inputs that are available depends on which options are enabled. See *Appendix B: Options Summary* for details.

Specifications

For full specifications see *Appendix D: Input Characteristics*.

Speed Inputs

The 4 Speed Inputs are identical to the Digital Inputs except that they can also be configured to suit Variable Reluctance (Magnetic) sensors such as some wheel speed sensors. Because the amplitude of the signal from these sensors varies with speed of rotation, variable trigger levels are required, which must vary with the frequency of the input signal.

The Speed Inputs can also be used with Hall Effect type wheel speed sensors.

- Note that Inputs 1 & 2 use common trigger thresholds and a common pullup resistor switch, as do Inputs 3 & 4, therefore the same type of sensors need to be used on each pair of inputs.
- Note also that the Pulse Width measurement method measures the high time of the pulse rather than the low time as measured by the Digital Inputs.

Options

Note that the number of inputs that are available depends on which options are enabled. See the Options Summary in the Appendices for details.

Specifications

For full specifications see the Appendices.

Internal Sensors

The ADL includes internal sensors for battery voltage and internal temperature.

Electrical Specifications

See the Appendices for more detail on each type of input.

Auxiliary Outputs

The ADL has 8 Auxiliary Outputs which may be used to control various vehicle functions such as: Gear Change Lights, Warning Lights, Thematic Fan, Gear Box Oil Pump, etc.

Items such as Thematic Fans or Pump Control should be setup using the User Conditions or the general purpose Tables, there is no specific setup item for these types of devices.

The Auxiliary Outputs switch to ground and can drive up to 0.5 Amps. Devices that consume more than 0.5 Amps such as motors should be driven via a relay.

They Auxiliary Outputs can be configured for switched or pulsed control.

Options

Note that the number of outputs that are available depends on which options are enabled. See *Appendix B: Options Summary* for details.

Specifications

For full specifications see *Appendix E: Auxiliary Output Characteristics*.

Communications Overview

The ADL has two communications ports which are used to communicate with other devices.

RS232 Communications Port

The RS232 communications port can be connected to an ECU or similar device and to a Radio Telemetry device. A **MoTeC** telemetry kit is available which provides high quality data transmission and flexible data display.

- Note that when connected to both an ECU via RS232 and to a Telemetry device, the baud rates of the two devices must be the same (usually 9600 or 19200 baud).

CAN Communications Port

The CAN (Control Area Network) communications port can be connected to other devices with a compatible CAN port. The advantage of CAN is that many devices can be connected to the CAN bus at once, which allows all connected devices to communicate with each other, also the CAN port communicates at very high speed.

Other **MoTeC** products that use CAN for intercommunication include the M800, BR2, PLM and MDD.

Note that these communicate at 1Mbit/sec, so any other devices connected on the CAN bus must also communicate at 1Mbit/sec.

The CAN communications port is also used for all PC communications, including configuration of the ADL and unloading the logged data.

ECU Connection

The ADL can be connected to most Engine Management Systems (ECUs). This avoids duplication of sensors and allows the ADL to display and log many ECU parameters.

The ECU may send up to 40 values to the ADL. The update rate of these values depends on how many values are transmitted, the communications baud rate and if sent using CAN or RS232. For RS232 the typical update rate is about 20 times per second and for CAN it is about 50 times per second. Note that logging the ECU values faster than these rates is unnecessary and will reduce the total logging time.

- Note that if the ADL is connected to a **MoTeC** M800 ECU the M800 sensors should be calibrated in metric otherwise special scaling will be required.

Telemetry

The ADL can transmit real time and/or end of lap telemetry data. This allows monitoring of the current vehicle condition, position on the track, lap times, fuel remaining, laps remaining etc.

The real time telemetry data is transmitted continuously.

The end of lap telemetry data is transmitted at a specified time after the lap beacon is detected

- Note that if RS232 ECU communications is used then the telemetry baud rate must be the same as the ECU communications baud rate (normally 9600 or 19200 baud)
- Note that the Telemetry option is required.

Lap Beacon

A Lap Beacon can be connected to the ADL in order to record Lap Times for display and to provide lap reference information for the data logging analysis software.

The **MoTeC** Lap Beacon consists of a Transmitter which is mounted beside the track and a Receiver which is mounted in the vehicle.

Multiple beacon transmitters may also be used to generate split times.

For further details refer to the Lap Beacon manual.

Options

Various options allow the ADL to be configured as a simple stand-alone dash or to be upgraded to a sophisticated data logging and display system.

The options can be enabled at any time by entering a password.

Note that the ADL does not require a Software Update Unit (SUU) to enable the options, as required by the M4 (pre M4e), M48 & M8 ECUs.

See *Appendix B: Options Summary* for details.

Software

The ADL comes with software packages for managing the ADL, analysing the logged data and monitoring the telemetry link.

The software must be run on an IBM compatible personal computer running Windows 95/98/Me/NT/2000/XP.

The following software programs are provided:

Dash Manager

Dash Manager is used for configuration, testing, retrieving the logged data and for general management of the ADL.

An overview of Dash Manager is included latter in this manual. For detailed information use the Dash Manager help system.

Interpreter

Interpreter is used to analyse the logged data.

Data Logging analysis is covered in a separate manual.

Telemetry Monitor

The Telemetry Monitor software is used to monitor the optional Telemetry link and allows viewing of the telemetry data in various graphical formats such as Charts, Bar Graphs and Dial Gauges. It can also show the vehicles current track position on a track map and compare the current vehicle data to reference data.

Alarms can also be set to indicate when a particular value, such as Engine Temperature exceeds a user programmable limit.

BR2Config

This program is used to configure the BR2 beacon receiver via a CAN connection. BR2 configuration is covered in the BR2 Manual.

Field Updateable Control Software

The ADL control software (firmware) is field updatable so that new software features can be used as they become available.

Note that a Software Update Unit (SUU) is not required to upgrade the ADL software, as required by the M4, M48 & M8 ECUs.

CAN Cable

The CAN Cable allows the computer to communicate with the ADL at very high speed.

The CAN Cable connects between the PC Printer Port (Parallel Port) and the CAR cable, which is mounted in the vehicle and connects to the ADL.

Be sure that the CAN Cable is connected directly to the PC, do not use an extension cable or switch box between the PC and the CAN Cable otherwise incorrect operation may result.

The CAN Cable may be connected to parallel port 1 or 2, which is automatically detected by the software. Note that the PC parallel port must be a bidirectional type.

The CAN Cable contains electronics which is powered via the cable from the ADL.

The CAN Cable can be extended by up to 12 meters. Note that a special 100 ohm data cable is required.

Installation

Mounting

Mounting Dimensions

Refer to the product dimensions in the Appendices.

Attachment

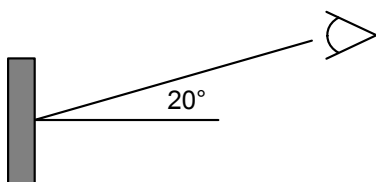
Use a washer between the unit and the mounting panel to ensure that the unit is mounted only at the three mounting points (to avoid twisting the case).

Do not over tighten the mounting screws (to avoid twisting the case).

Vibration isolation may be desirable if the vehicle vibrates severely.

Orientation

For best contrast, the display should be viewed at approximately 20 degrees above normal, however the ADL will give good contrast between 0 and 40 degrees. Display reflections should also be considered when determining the mounting angle.



Lighting

The ADL display has excellent visibility in a very wide range of lighting conditions, however for night time use a front light module is required.

Connector Access

Mount so that the connector may be easily accessed.

Display Care

Take care when cleaning the display, use a soft cloth to avoid scratching the display and avoid aggressive solvents.

Wiring

Pin Connection Details

The ADL pin connection list appears at the back of this manual.

Wire

Use 22# Tefzel wire (Mil Spec M22759/16-22) (5 amps max at 100 °C)

Note that the Tefzel wire is difficult to strip unless the correct stripping tool is used. Be careful not to nick the wires as this may result in wire failure or poor crimping.

Some sensor connectors may not be available with 22# terminals, in which case doubling the wire over gives the equivalent of an 18# wire, which is suitable for many of the common sensor terminals.

For full wire specifications see Appendix N: Wire Specifications.

Crimping

Ensure that the correct crimping tool is used for all contacts to ensure a reliable connection.

Power

Power the ADL via a separate switch and a 5 Amp fuse. The separate switch is recommended so that the computer can communicate with the ADL without needing to turn the rest of the vehicle power on.

Ground

Ground the ADL to a good ground. The ground should have a direct connection to the vehicle battery.

Sensor Wiring

MoTeC can supply wiring details for all sensors.

MoTeC Supplied Wiring Loom

MoTeC can supply either partial or complete wiring looms to suit each application.

Custom Wiring Loom

If creating a custom wiring loom the following important points should be observed.

Connector

The ADL uses a 79 pin Auto Sport connector, see *Appendix M: Connector* for full details.

To ensure that the connector is sealed plug unused holes with filler plugs. A heat shrink boot may also be used if desired.

Crimp Tool

The correct mil spec crimping tool must be used for the ADL crimp pins. See *Appendix M: Connector* for details.

- Note that the Crimp Contacts are type 22D which is needed to set the crimp tool correctly.

CAN Bus and CAN Cable Wiring

Refer to *Appendix G: CAN Wiring - Multiple Device* and or *Appendix H: CAN Wiring - Single Device* for details.

External Buttons

A number of external buttons are required for various functions of the ADL.

Typically these buttons are used for:

- Display Mode

- Display Next Line (and optionally Previous Line)
- Alarm Acknowledge
- Lap Number Reset
- Fuel Remaining Reset

These buttons are normally wired to the ADL Switch Input pins, but may also be wired to the Digital or Analog Inputs, if the Switch Inputs are occupied.

The buttons should be wired between an ADL input and ADL 0V pins.

Note that if wired to an Analog Voltage input an external pull-up resistor must be connected between the input pin and the 5V sensor supply.

External Lights

All lights including the Shift Lights & Warning Lights must be wired externally. This allows a choice of lights and allows the lights to be placed in the optimum position.

Usually LEDs or LED arrays are used.

The lights must be wired between one of the Auxiliary Outputs and the ADL Battery Positive.

The lights must not consume more than 0.5 Amps (6 watts at 12Volts) unless activated via a relay.

Thermocouples

Thermocouples must be wired to the ADL via a thermocouple amplifier.

The **MoTeC** Thermocouple Amplifier (TCA) may be used with K Type thermocouples and may be connected to either the Analog Voltage or Analog Temperature inputs of the ADL.

Connecting to a MoTeC ECU

An ECU may be connected to the ADL which will make information in the ECU available to the ADL for display or logging or any other purpose.

The **MoTeC** M800/M880 ECU may be connected via CAN or via RS232.

The **MoTeC** M4, M48 & M8 ECUs must be connected via RS232.

Connection via RS232

The telemetry feature of the **MoTeC** ECU is used to send data to the ADL via an RS232 connection.

See Appendix J: ECU to ADL Wiring (RS232) for wiring details.

ECU Setup

The ECU 'Telemetry Set' and 'Telemetry Baud Rate' should be selected to suit an RS232 communications template supported by the ADL.

ADL Setup

Setup for the ADL is done in the 'Inputs | Communications' setup screen, on the RS232 tab.

Select a communications template that matches the ECU type and ECU telemetry set.

In the displayed channel list, check those channels that you wish to receive in the ADL

Interruption of the Data

Note that the data flow to the ADL will be interrupted while a computer is connected to the ECU and will not resume for up to 10 seconds after the computer has been unplugged. During this period any value that comes from the ECU, such as RPM or Engine Temperature will not be updated and will normally be displayed as zero. On latter versions of the ECU software the 10 second delay is reduced to 1 second.

Connection via CAN

The ADL and M800 must be connected on the same CAN bus.

See *Appendix G: CAN Wiring - Multiple Device* for wiring details.

ECU Setup

Set the 'CAN Data Set' to a set supported by the ADL (normally set 1).

The 'CAN Address' must also be set.

ADL Setup

Setup for the ADL is done in the 'Inputs | Communications' setup screen, on an unused CAN tab.

Select a communications template that matches the ECU type and ECU set.

In the displayed channel list, check those channels that you wish to receive in the ADL.

ECU Sensor Calibrations

Metric Calibration of the sensors should be used in the ECU otherwise special scaling is required in the ADL communications setup.

Telemetry

The ADL can transmit telemetry information via a radio link.

- Note that if RS232 ECU communications is used then the telemetry baud rate must be the same as the ECU communications baud rate (normally 9600 or 19200 baud)

Wiring

Wiring is dependent on the particular telemetry system, please consult the wiring details supplied with the telemetry system.

ADL Setup

Set the RS232 communications for Telemetry Only, or ECU and Telemetry.

The telemetry channels should then be configured in the separate Telemetry Setup screen, found under the 'Functions' menu.

Dash Manager Software

Introduction

The following is an overview of the main concepts of the Dash Manager software. More detailed information is available from the online help provided with Dash Manager. Online help is accessed by clicking on the help buttons that appear on most Dash Manager screens and by selecting Help from the main menu.

The Dash Manager software is used for:

- Editing the configuration files
- Sending configuration files to the ADL
- Retrieving the logged data from the ADL
- Testing the ADL
- Enabling ADL options
- Upgrading the ADL software version
- Changing event, venue and vehicle details

Computer Requirements

The Personal Computer (PC) must be an IBM PC compatible running Windows 95/98/Me/NT/2000/XP.

Recommended Minimum Specifications

Pentium II, 32Mb RAM, Parallel Port (for CAN Cable)

Printer Port (Parallel Port)

The CAN Cable connects to the PC parallel port.

The parallel port must be either an 8 bit bidirectional port or an ECP parallel port. Single directional parallel ports will not work, these are found on some older computers and some plug in cards.

Either parallel port 1 or 2 may be used, which is automatically detected by the software.

Installing Dash Manager

From Floppy Disk

Place the floppy disk marked Disk1 in the floppy drive.

Click on the Windows *Start* button and select Run.

Type A:\Setup

Follow the setup program instructions.

To Start Dash Manager click on the Windows *Start* button and select Dash Manager.

From a CD-ROM

Place the CD-ROM into the CD drive of the pc.

A new window will appear. This can be navigated in the same way as a web page.

If it does not appear, click on the Windows *Start* button and select Run. Type 'D:\index.htm'

Click on the button marked 'Software Archive'.

Select the version of Dash Manager (or other software) that you wish to install and click on the name.

When the dialog appears asking you to 'Open' or 'Save' the selected file, choose 'Open' and then follow the setup program instructions.

From the Internet

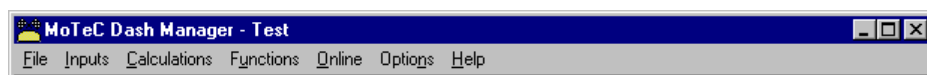
Go to the **MoTeC** web site and select Software Updates | Current Release Software. Click on one of the Dash Manager links to start the down load and choose to save the file to a location where it can be easily located after downloading (such as the desktop). After downloading double click on the file to start the installation process.

Mouse & Keyboard

The Dash Manager Software may be operated using the keyboard or a mouse.

On many Notebook PCs the pointing device (mouse substitute) is difficult to use and in many cases it is much easier and faster to use the keyboard. For details on using the keyboard refer to the topic on Windows Keyboard Use latter in this manual.

Main Menu

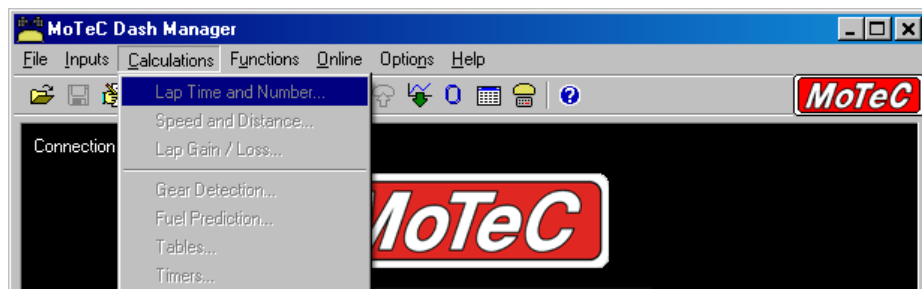


The main menu is used to access all of the features of the Dash Manager software. Click the mouse on one of the menu items or press the Alt key together with the underlined letter, for example press Alt + F to select the File menu.

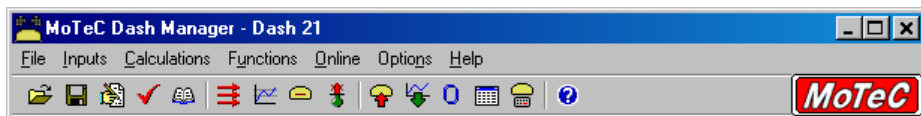
Unavailable Menu Items

When Dash Manager is started the items related to changing the configuration will be unavailable, this is because a configuration file has not been selected.

Unavailable items appear grey as shown below.



Button Bar (Toolbar)



The Button Bar provides an alternative way of activating some of the commonly used items on the main menu. To find out what each item does hold the mouse pointer over the button of interest until a hint appears.

On line / Off line

All changes to the ADL configuration are performed 'Off Line', ie without the PC communicating with the ADL. Once the configuration changes have been made and saved to a file, they can be sent to the ADL which is an 'On line' process, ie the PC is communicating with the ADL.

Many other functions are also performed 'On line', for example, Get Logged Data, Zero Sensors, Monitor Active channels etc.

To consolidate the Online concept, all on line activities are placed in the 'Online' Menu item. All other menu items perform Off Line activities.

Configuration

The configuration of the ADL determines exactly how it operates.

The strength of the ADL lies in its flexibility of configuration. All aspects of the ADL can be configured including, which sensor is connected to which input, the calibration of each sensor, what to display and where to display it, what to log and how fast to log it, tachometer range, warning alarms, multi stage shift lights, etc, etc.

Configuration Files

The ADL configurations are stored in files on the PC hard disk and can be sent to the ADL at any time.

When changing the configuration, changes are only made to the file on the PC. The file must be sent to the ADL before the changes take effect.

Creating a New Configuration File

A new configuration file can be created by selecting *File | New* from the main menu, this will create a new configuration based on one of a number of predefined templates.

If using a **MoTeC** supplied wiring kit there will be a template supplied to suit that kit. In general this template should be ready to use other than vehicle dependent calibrations such as wheel speed. Items such as the Alarms and Display setup should also be checked and modified if necessary to suit the application.

After a new configuration has been defined, it should be saved with a meaningful name by selecting *File | Save* from the main menu, the file may then be sent to the ADL by selecting *Online | Send Configuration* from the main menu.

Alternatively a new file can be created by loading an existing configuration file and saving it to a new file by selecting *File | Save As* from the main menu.

Opening an Existing File

Before an existing configuration file can be modified or sent to the ADL it must first be opened.

To open a configuration file select *File | Open* from the main menu and select the desired file.

Note that the most recently used files appear at the bottom of the File menu, which is often the easiest way to open a recently used file.

Sending the Configuration to the ADL

The currently open configuration file can be sent to the ADL by selecting *Online | Send Configuration* from the main menu.

When a configuration file is sent to the ADL any changes are automatically saved to the file.

Retrieving the Configuration from the ADL

The configuration can be retrieved from the ADL if necessary by selecting *Online | Get Configuration* from the 'Online' menu. However this is not normally necessary unless the original file is not available on the PC.

Backups

Whenever a file is saved, the previous contents of the file are saved in the 'Save Backups' directory. The total number of files is limited to 100.

When a file is sent to the ADL the existing ADL data is retrieved and stored in the 'From Dash Backups' directory, this is in case the data in the ADL needs to be restored. The total number of files is limited to 10.

File Management

The configuration files may be Renamed, Deleted, sent to a Floppy Disk etc by clicking the right mouse button on the desired file when the Open File screen is displayed.

Changing the Configuration

Once an existing configuration file has been opened, or a new one created the various parts of the configuration may be modified by choosing the appropriate items from the main menu. The configuration setup items are accessed from the main menu items: *Inputs*, *Calculations* and *Functions*.

Setup Details

For details on each of the Dash Manager setup screens click on the *Help* button that is provided on each screen.

Configuration Sequence

The configuration is best setup in the following order:

1. Inputs (Input Pins & Communications)
2. Calculations (Lap Time, Fuel Prediction etc)
3. Functions (Logging, Display, Alarms, Auxiliary Outputs etc)

This simplifies the setup procedure by ensuring that the required channels are available for the functions that use them.

- Note that channels cannot be used until they have been generated by an input, calculation or function.

Versions and Updating

Updating

The software inside the ADL can be updated by the user at any time to take advantage of the latest features offered by **MoTeC**.

To update the ADL software version select *Online | Update Version* from the Dash Manager main menu.

Matching Versions

The version of software inside the ADL must match the version of the Dash Manager software. If the versions do not match, Dash Manager will show a warning when it attempts to communicate with the ADL.

To check the version of Dash Manager select *Help | About MoTeC Dash Manager* from the main menu.

Configuration File Version

After the ADL version has been upgraded the configuration file in the ADL must also be updated to match the new version. The display will show a warning until a new configuration has been sent to the ADL.

From Dash Manager version 3.0, when performing an upgrade, there is an option to automatically upgrade the configuration file in the ADL.

This eliminates the necessity to manually upgrade the file (see Converting Older Version Files) and then sending it.

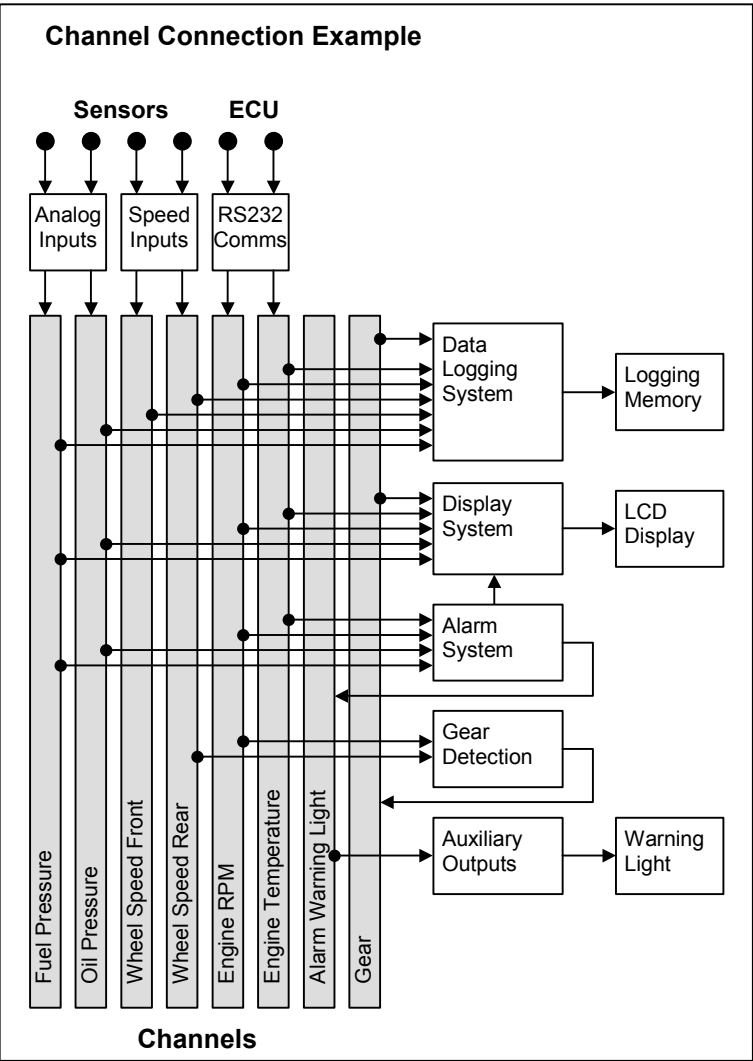
Converting Older Version Configuration Files

An older version configuration file can be converted to the latest version by selecting the appropriate version in the 'File of type' entry box on the File Open screen. When the file is opened the file is converted to the new version format and saved with the same file name but with the new version file extension. The old file is not changed.



Channels

Channels are used to convey information between the various systems of the ADL. For example an input pin may feed a channel called 'Engine Temperature', this channel may then be used by any other system, such as the Display or Data Logging systems.



Channel List

MoTeC has defined an extensive list of channels. All systems within the ADL that generate values must choose to feed one of these channels.

General Purpose Channels

Since the use of all channels can not be predetermined, a number of general purpose channels have been included for occasions when a suitable predefined channel is not available.

These channels may be required when measuring an uncommon value, or when a general purpose function needs to generate a special output channel, for example a 3D table may generate an output channel to control a valve of some sort, in which case a general purpose channel may be used and renamed appropriately.

Channel Usage

The ADL channel scheme allows complete flexibility in channel usage, as any available channel can be used by any other function, i.e. any channel can be logged, displayed, used in conditions, used in alarms, used as an input to the user definable tables, etc.

Channel Properties

For each channel the following properties have been defined, some of which may be modified by the user.

Properties that may be modified by the user:

- Name
- Abbreviation
- Units (eg. Celsius, Fahrenheit etc)

Fixed Details

- Measurement Type (Temperature etc)
- Resolution (eg. 0.1 °C for Engine Temperature)
- Suitable Logging rates
- Suitable Display filtering
- Minimum and Max Range

Predefining these properties makes the channels easy to use throughout the rest of the software, for example knowing the measurement type allows the channels to be displayed in any units suitable for that type, with automatic conversion between the units. For example all temperature channels can be displayed in Celsius, Fahrenheit or Kelvin.

Channel Names & Abbreviations

The channels names may be changed if necessary. However name changes should be limited to name preferences rather than redefining the purpose of the channel, except for the general purpose channels which may be renamed to suit the current use.

Channel Units

The units for a channel can be selected from a predefined list, for example the Engine Temperature channel may have units of Celsius, Fahrenheit or Kelvin. Conversion between units is automatically handled by the software.

Note that the units are used for display purposes only. This means that the units can be changed at any time with out affecting the calibration of the channel.

Channel Resolution

The resolution of all channels is fixed, for example the resolution of the Engine Temperature channel is fixed at 0.1 °C.

Fixed channel resolutions ensure that the unit conversion system works properly and that channel comparisons can be performed correctly.

Selecting Channels

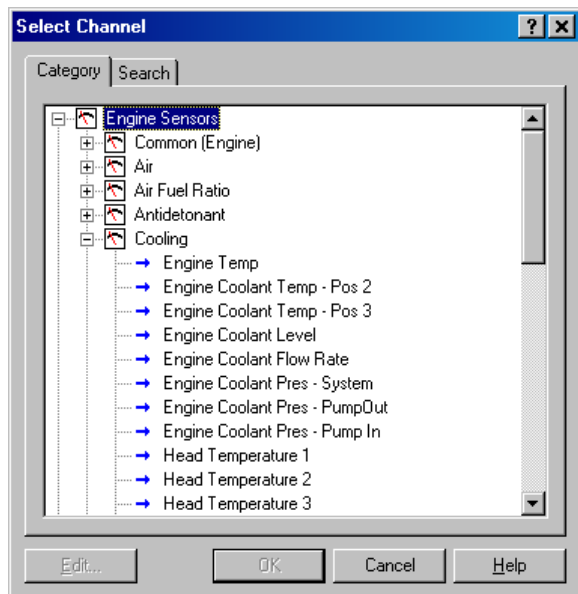
There are two methods of selecting channels, either the Category Method or the Search Method.

Category Method

This method divides all the channels into categories and sub categories, so that the list can be narrowed down to a small list of channels. For example, the 'Engine Sensors / Cooling' category shows a list of channels associated with the cooling system of the engine.

When selecting a channel from the complete list of channels, it is usually easiest to use the category selection method, for example when assigning a channel to an input pin.

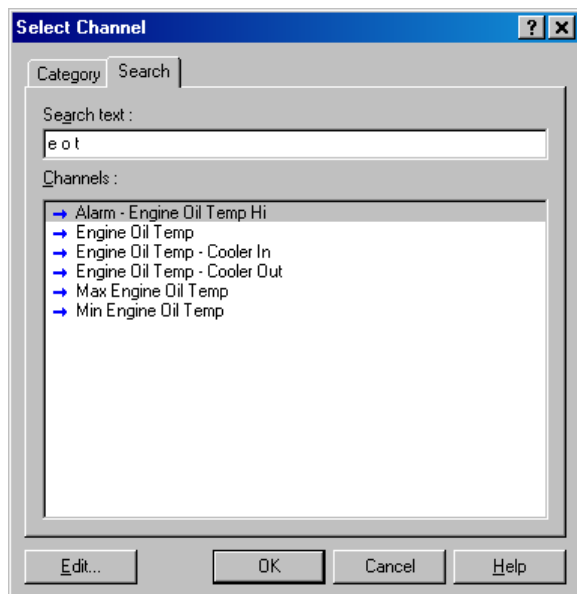
To expand a category click on the + sign next to the category name.



Search Method

This method lists all channels in alphabetical order and allows a channel to be found either by typing the first few letters of any word in the channel name, or by scrolling through the list.

Note that the words may be typed out of order so that 'Engine Oil Temperature' could be found by typing "temp eng oil" or "oil t eng" or "e o t"



This method is most useful when selecting a channel from the available channels. For example, if 'Engine Temperature' has been assigned to an input pin, it can be easily located in the Search list, since this list normally only contains 50 to 100 items.

Conditions Overview

Conditions are used extensively throughout the software to define a true / false condition based on comparing one or more channels to a value. Most conditions can perform up to 6 comparisons.

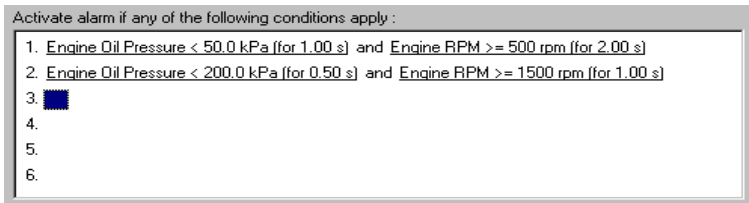
Conditions are used to define features such as when to start logging, or when to activate an alarm.

For example an Engine Oil Pressure alarm may read as: Activate the alarm when: Engine Oil Pressure < 200 kPa for 1 second AND Engine RPM > 1500

RPM for 2 seconds. Note that this condition could also include a test for when the engine is greater than 500 RPM but set at a lower pressure, which would cover the range from 500 to 1500 RPM, which might read as: Engine Oil Pressure < 50 kPa for 1 second AND Engine RPM > 500 RPM for 5 seconds.

In the case of alarms, the condition can also contain an increment or decrement amount, which may increase or decrease the test value by a certain amount each time the alarm is acknowledged. The number of times this value is incremented can also be limited.

The following shows an example of an Engine Oil Pressure alarm condition.



Checking Operation

Monitor Channels

The currently active channels can be monitored to allow checking of the operation of all functions and measurements.

To monitor the active channels select *Online | Monitor Channels* from the main menu.

Oscilloscope Screen

Any channel may also be shown on an oscilloscope style screen by pressing the *Utilities | Oscilloscope* button on the *Monitor Channels* screen.

Simulate

The Simulate feature allows most input channels to be manually changed so that the ADL operation can be checked under abnormal conditions, eg High Engine Temp.

This is extremely useful for checking that the ADL is working as expected.

To activate the Simulate screen select *Online | Simulate* from the main menu.

Tests

A number of tests are provided to check the operation of the ADL, such as the Display Test.

To run one of the tests select the appropriate test from the *Online* menu.

Sensor Zeroing

Some sensors require regular zeroing, for example Steering Angle, Suspension Position, Ride Heights, G Force Sensors & Throttle Position. Dash Manager provides a screen to allow easy zeroing of all these sensors.

To zero the sensors select *Online | Zero Sensors* from the main menu.

Details Editor

The Details Editor allows details about the Event, Venue, & Vehicle to be entered.

This data is attached to the logged data file for latter reference.

Some of this data is also attached to the configuration to determine the operation of some functions, for example, the Track Length is used to determine Lap Speed, if used.

To change the details select *File | Edit Details* from the main menu.

Windows Keyboard Use

This section gives details on how to use the keyboard with Windows applications.

Main Menu



The Main Menu can be accessed by holding down the Alt key then pressing the key corresponding to the underlined letter in the menu name, followed by the underlined letter of the item in the drop down menu. Eg Alt F, N for File New.

Alternatively press and release the Alt key then select the desired menu item using the arrow keys, then press enter to activate it.

Closing a Window

Enter = OK or Close (Only works when the OK or Cancel button has a bold line around it)

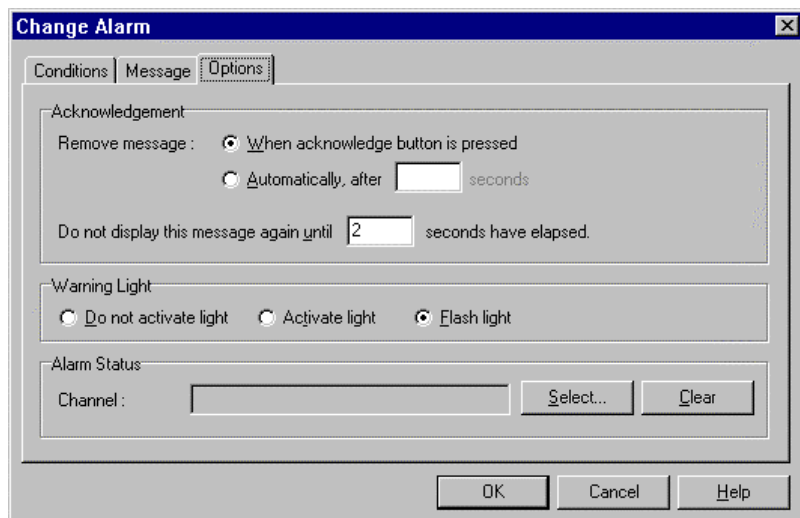
Esc = Cancel or Close

Getting Help

To get help on the current screen or screen item press the F1 key, or press Alt + H if the screen has a Help button.

To access the main help system select Help from the Main Menu.

Selecting an Item in a Window



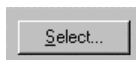
To access the various items in a window hold down the Alt key and press the key corresponding to the underlined letter of the item of interest, for example to select the 'Flash Light' item press Alt F

Alternatively the Tab key may be used to progress from one item to the next (use Shift Tab to move backwards). The selected control is usually indicated by a dotted line around it, or by highlighting the text or item selected within the control.

Using the Selected Item

The method of using the selected item (or control) depends on what type of control it is. The common controls are detailed below:

Button



Buttons are generally used to show another screen or perform a particular function.

Hold down the Alt key then press the underlined Letter (S), or navigate to the button using the Tab key then press the Enter key or the Space Bar.

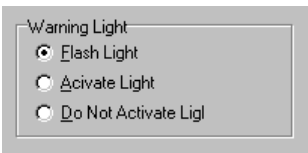
Check Box



A check box is used to tick on or off a particular option.

Hold down the Alt key then press the underlined Letter (F), or navigate to the Check Box using the Tab key then press the Space Bar.

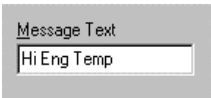
Radio Buttons



Radio buttons are used to select an item from a group of options.

Hold down the Alt key then press the underlined Letter of the desired option (F , A or D), or navigate to the Radio Buttons group using the Tab key then use the arrow keys to select the desired item.

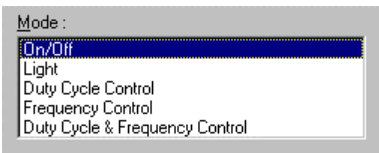
Edit



An edit control is used to enter a value or text.

Hold down the Alt key then press the underlined Letter of the text above the edit box (M) or navigate to the button using the Tab key then type in the new value or text. Use the Backspace key or Delete key to remove unwanted characters

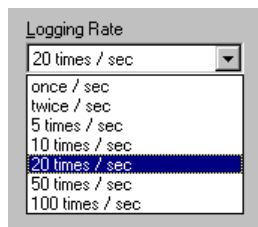
List



A list is used to select from a number of options.

Hold down the Alt key then press the underlined Letter of the text above the list (M) or navigate to the button using the Tab key then select the desired item using the Arrow keys.

Drop down List



A drop down list is used to select from a number of items, but only the selected item is shown until a new item needs to be selected.

Hold down the Alt key then press the underlined Letter of the text above the list (L) or navigate to the button using the Tab key then select the desired item using the Arrow keys, Press the Enter key to close the list.

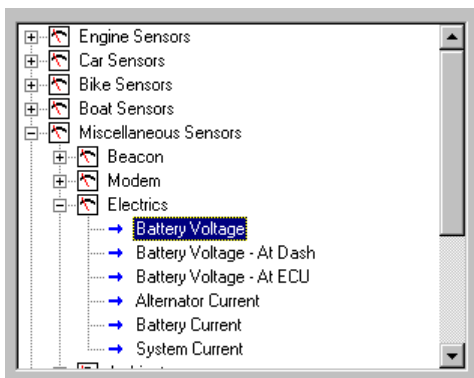
Tabs



Tabs are used to select the different tab pages of a screen.

To select the next tab hold down the Ctrl key then press the Tab key.
To select the previous tab hold down the Ctrl key and Shift keys then press the Tab key.

Tree View



A Tree View is used to select items from a hierarchical list

Up Arrow = Move the cursor up (selects the item above)

Down Arrow = Move the cursor down (selects the item below)

Right Arrow = Expand (Expandable branches indicated by a +)

Left Arrow = Collapse (Collapsible branches indicated by a -)

Appendices

Appendix A: General Specifications

Physical

Case Size 180.5 x 91.5 x 18.0 mm (7.1 x 3.6 x 0.7 inches)

Weight 385 grams (0.85 lb)

Power Supply

Operating Voltage : 7 to 22 Volts DC

Operating Current : 0.15 Amps Typical (excluding sensor currents)

Reverse Battery Protection

Battery Transient Protection

Operating Temperature

Internal Temperature Range -10 to 80°C

Ambient Temperature Range -10 to 70°C typical

Sensor Supply Current

5V Sensor Supply : 0.2 Amps Max

8V Sensor Supply : 0.3 Amps Max

Internal Sensors

Battery Voltage

Dash Temperature

Appendix B: Options Summary

The following options are available :

Standard I/O

The ADL comes standard with the following I/O (Input / Output) capabilities.

- 6 Analog Voltage Inputs (AV1 to AV6)
- 4 Analog Temperature Inputs (AT1 to AT4)
- 4 Switch Inputs (Sw1 to Sw4)
- 2 Digital Inputs (Dig1 & Dig2)
- 2 Wheel Speed Inputs (Spd1 & Spd3)
- 4 Auxiliary Outputs (Aux1 to Aux4)

30 I/O Option

- 10 Analog Voltage Inputs (AV1 to AV10)
- 4 Analog Temperature Inputs (AT1 to AT4)
- 4 Switch Inputs (Sw1 to Sw4)
- 2 Digital Inputs (Dig1 & Dig2)
- 4 Wheel Speed Inputs (Spd1 to Spd4)
- 4 Auxiliary Outputs (Aux1 to Aux4)
- 2 0 to 1 Volt inputs using the LA1 & LA2 pins

50 I/O Option

- 20 Analog Voltage Inputs (AV1 to AV20)
- 8 Analog Temperature Inputs (AT1 to AT8)
- 4 Switch Inputs (Sw1 to Sw4)
- 4 Digital Inputs (Dig1 & Dig4)
- 4 Wheel Speed Inputs (Spd1 to Spd4)
- 8 Auxiliary Outputs (Aux1 to Aux8)
- 2 0 to 1 Volt inputs using the LA1 & LA2 pins

384k Memory Option

384k Bytes (0.384 Mbytes) of logging memory.

1M Memory Option

1 Mbyte of logging memory.

2M Memory Option

2 Mbyte of logging memory.

4M Memory Option

4 Mbyte of logging memory plus Fastest Lap and Burst Logging.

8M Memory Option

8 Mbyte of logging memory.

Note that this option is only available on units with serial number greater than 2000.

Pro Logging Option

Advanced Analysis software, including multiple overlays and user mathematics.

Lambda Option

2 Wide Band Lambda (Air fuel ratio) measurement inputs.

Telemetry Option

Radio telemetry transmission.

Remote Logging Option

Allows logging to an external bulk memory device with removable memory cards.

Enable Option

Enables the ADL.

The ADL will not function until this option is enabled.

Appendix C: Dash Manager Command Line

Usage:

dash.exe -c[connection] -d -x -l -e -t -s [config file name]

[config file name]

(Optional)

Fully qualified path to the configuration file.

(eg "c:\motec\dash\config\bathurst.d30")

Note: the path must include the file extension (eg .d30)

Options :

Each of the following options can be given as "/[character]" or "-[character]". They are shown here as "-[character]".

-c[Connection Name]

(Optional)

Select a preconfigured connection by name as configured in the dash connections dialog.

(eg -c"Primary CAN Connection").

Note: There must not be a space between the c and the connection name.

-d

(Optional)

Causes the debug console to be displayed.

Only available for debug builds.

-x

(Optional)

Causes the app to terminate when one of the following tasks has been performed.

Tasks :

One or more of the following may be specified.

-l

(Optional)

Perform a "Get Logged Data" operation.

-e

(Optional)

Perform a "Get Engine Log" operation.

-t

(Optional)

Perform a "Get Tell-tale Values" operation.

-p

(Optional)

Perform a "Print Summary" operation.

Note: The config file must be specified using a fully qualified path including the file extension.

(eg -p "c:\motec\dash\config\bathurst.d30")

Note: There must be a space between -p and config name.

-s

(Optional)

Perform a "Send Configuration" operation.

Note: The config file must be specified using a fully qualified path including the file extension.

(eg -s "c:\motec\dash\config\bathurst.d30")

Note: There must be a space between -s and config name.

-u

(Optional)

Perform an "Upgrade Dash Version" operation.

Appendix D: Input Characteristics

Analog Voltage Inputs

Suitable for : Potentiometers, Voltage output sensors & Variable resistance sensors with a pullup resistor

Measurement Voltage Range : 0 to 15 V

- Note that voltages outside this range may affect the readings on other inputs.

Input Resistance : 100k ohms to 0V

Resolution : 3.74 mV

Measurement Methods : Ratiometric, Absolute, Variable Resistance, Off/On

Update Rate (Inputs 1 to 4 & 11 to 14) : 1000 times / second

Update Rate (Other inputs) : 500 times / second

Filter: 150Hz 1st order

Calibration Accuracy

Gain (Ratiometric operation) 0.05% max

Gain (Absolute operation) 0.15% max

Offset ± 6 mV max

Linearity ± 6 mV max

Temperature Stability 60 ppm/°C max

Calibration Schedule 12 Months

Analog Temp Inputs

Suitable for : 2 wire variable resistance sensors and some voltage output sensors.

Measurement Voltage Range : 0 to 15 V

- Note that voltages outside this range may affect the readings on other inputs.

Input Resistance : 1000 ohms pullup to 5V sensor supply + 100k to 0V

Resolution : 3.74 mV

Measurement Methods : Ratiometric, Absolute, Variable Resistance, Off/On

Update Rate: 500 times / second

Filter: 150Hz 1st order

Calibration Accuracy

Gain (Ratiometric operation) 0.05% max

Gain (Absolute operation) 0.15% max

Offset ± 6 mV max

Linearity ± 6 mV max

Temperature Stability 60 ppm/°C max

Calibration Schedule 12 Months

Lambda Inputs

Type : Wide Band **MoTeC**

Measurement Range : 0.75 to 1.50 Lambda (or 0 to 1V)

Accuracy : 1.5 % up to 1.20 Lambda

Update Rate: 100 times / second

Switch Inputs

Suitable for : Switch to 0V, or Off / On Voltage signal

Pullup Resistor : 4700 ohms to 5V

Voltage Range : 0 to 15V

Positive Trigger Threshold : 3.5 V max

Negative Threshold : 1.0 V min

Hysteresis : 0.5 V Min

Measurement Methods : Off/ On only

Filter Time Constant: 22usec

Digital Inputs

Suitable for : Switch to 0V, Logic signal & open collector device (eg Hall Switch)

Pullup Resistor : 4700 ohms to 5V

Voltage Range : 0 to 15V

Positive Trigger Threshold : 3.5 V max

Negative Threshold : 1.0 V min

Hysteresis : 0.5 V Min

Update Rate: 100 times / second

Filter Time Constant: 22usec

Digital Input Measurement Methods

Frequency

Resolution 0.1 Hz

Maximum Frequency : 3200 Hz

Rising Edge Triggered

Period 1 usec

Measures period between rising edges

Resolution : 1 usec

Maximum : 32 msec

Period 100 usec

Measures period between rising edges

Resolution : 100 usec

Maximum : 3.2 sec

Pulse Width 1 usec

Measures pulse low time

Resolution : 1 usec

Maximum : 32 msec

Pulse Width 100 usec

Measures pulse low time

Resolution : 100 usec

Maximum : 3.2 sec

Speed Inputs

Can be used in two modes : Hall or Magnetic.

In Hall mode a 4700 ohm pullup resistor is connected to 5V and the trigger levels are fixed.

In Magnetic mode the pullup resistor is disengaged and the trigger levels can be varied depending on the input frequency.

Note that the Hall and Magnetic modes must be activated in pairs, ie inputs 1 & 2 must have the same mode and level settings, similarly inputs 3 & 4 must have the same mode and level settings.

Update Rate: 100 times / second

Filter Time Constant: 25usec

Speed Input Measurement Methods

Frequency

Resolution 0.1 Hz

Maximum Frequency : 3200 Hz

Falling Edge Triggered

Period 1 usec

Measures period between falling edges

Resolution : 1 usec

Maximum : 32 msec

Period 100 usec

Measures period between falling edges

Resolution : 100 usec

Maximum : 3.2 sec

Pulse Width 1 usec

Measures pulse high time

Resolution : 1 usec

Maximum : 32 msec

Pulse Width 100 usec

Measures pulse high time

Resolution : 100 usec

Maximum : 3.2 sec

Speed Input Modes

HALL Mode

Suitable for switch to 0V, Logic signal or open collector device (eg Hall Switch)

Pullup Resistor : 4700 ohms to 5V

Voltage Range : 0 to 15V

Positive Trigger Threshold : 3.0 V max

Negative Threshold : 2.8 V min

Hysteresis : 0.19 V Min

MAGNETIC Mode

Suitable for : Two wire magnetic sensor (Variable reluctance sensor)

Input Resistance : 100k ohms to ground (No Pullup)

Voltage Range : -100V to +100V

Programmable trigger levels, variable with channel value as follows :

Selected Level	Hi Trigger Level (Volts) max	Lo Trigger Level (Volts) min	Hysteresis (Volts) min
0.2	0.00	- 0.21	0.19
0.3	0.30	0.09	0.19
1.5	1.46	1.25	0.19
3.0	3.01	2.79	0.19
4.8	4.77	4.55	0.19

Analog Input Sampling

The following specifies the order in which the Analog input channels are sampled and the time between samples.

Inter channel period 14usec, except every 8 channels there is a 60usec gap.

Sampling alternates between Group1 and Group2 and is scheduled every 0.976563msec

Group1	Group2
AV1	AV1
AV11	AV11
AV2	AV2
AV12	AV12
AV3	AV3
AV13	AV13
AV4	AV4
AV14	AV14
AV5	AT5
AV15	Internal ADL Temp
AV6	AT6
AV16	Internal Battery Voltage
AV7	AT7
AV17	Internal Ref/2 AD2
AV8	AT8
AV18	Internal Ref/2 AD3
AT1	LA1
AV9	Internal 0V AD2
AT2	LA2
AV10	Internal 0V AD3
AT3	Internal Abs Ref 4V5
AV19	Internal Ref AD2
AT4	Internal Ref/2 AD1
AV20	Internal Ref AD3

Appendix E: Auxiliary Output Characteristics

Output Type : Open Collector (Drives to ground) with weak pullup (10k ohms) to battery positive

Current : 0.5 Amp max, current limited & thermal overload protected

Output Clamp : 50V Flyback Clamp (No Clamp Diode to supply).

Appendix F: CAN Bus Specification

CAN Bus

Data Rate: 1Mbit/sec

Terminating impedance and data cable impedance: 100 ohms: dictated by the PC communications cable (CAN cable)

Maximum length: 16 m including the CAN Cable.

Appendix G: CAN Wiring - Multiple Device

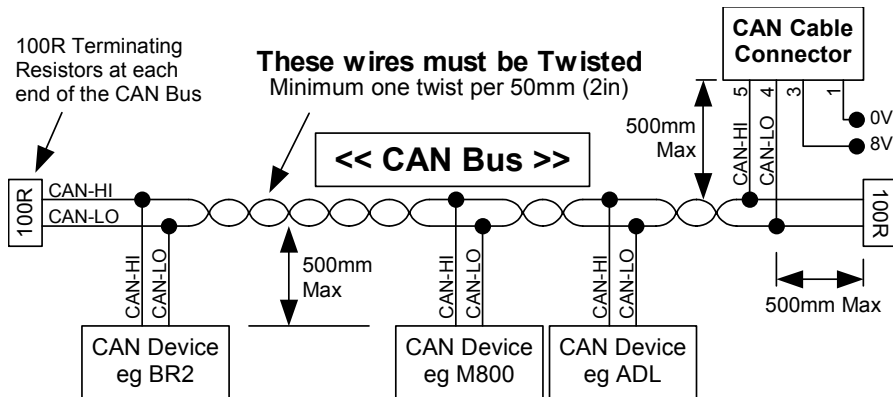
The CAN bus should consist of a twisted pair trunk with 100R (0.25Watt) terminating resistors at each end of the trunk.

The preferred cable for the trunk is 100R Data Cable but twisted 22# Tefzel is usually OK.

The maximum length of the bus is 16m (50ft) including the **MoTeC** CAN Cable (PC to CAN Bus Communications Cable)

CAN Devices (such as **MoTeC** ADL, BR2 etc) may be connected to the trunk with up to 500mm (20in) of twisted wire.

The connector for the CAN Communications Cable may also be connected to the trunk with up to 500mm (20in) of twisted wire and should be within 500mm of one end of the trunk. If desired two CAN Cable connectors may be used so that the **MoTeC** CAN Cable may be connected to either side of the vehicle. Both connectors must be within 500mm of each end of the trunk.



Short CAN Bus

If the CAN Bus is less than 2m (7ft) long then a single termination resistor may be used. The resistor should be placed at the opposite end of the CAN Bus to the CAN Cable connector.

Single Device

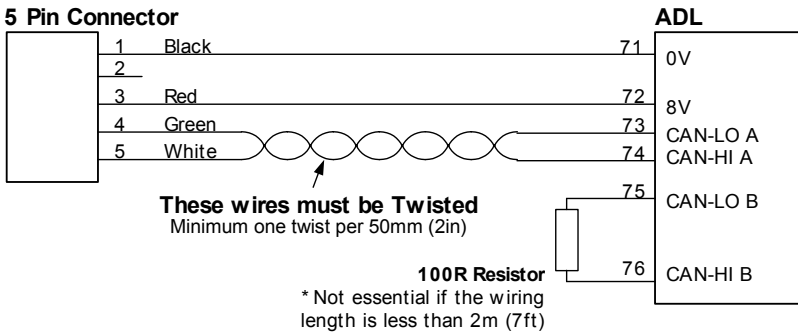
See Appendix H: CAN Wiring - Single Device

Appendix H: CAN Wiring - Single Device

When a single device is connected to the CAN bus then the wiring scheme shown below may be used to provide a connection point for the **MoTeC** CAN cable.

If the wiring length is less than 2m (7ft) then the terminating resistor is recommended but not essential.

If other devices are connected to the CAN bus a special wiring scheme is required, see *Appendix G: CAN Wiring - Multiple Device*.



Note that CAN-LO A is connected to CAN-LO B inside the ADL. Similarly CAN-HI A is connected to CAN-HI B. The 'B' connections are provided to simplify the wiring.

5 Pin Connector Type:

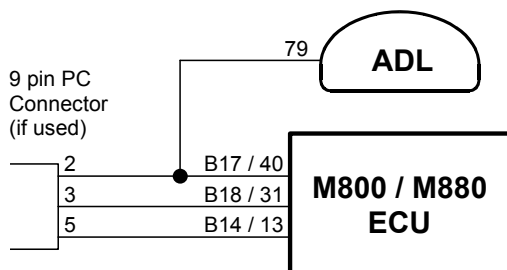
Deltron	716-0-0501	(Non Latching)
Neutrik	NC5FDL1	(Latching)

Appendix J: ECU to ADL Wiring (RS232)

The following details the methods for connecting the various **MoTeC** ECUs to the ADL via RS232. In all cases this is done using the serial data stream generated by the Telemetry function of each ECU.

In the case of the M800, M880 and M4e the ADL may be directly wired to the ECU because these ECU's use RS232 interface levels. On the M48, M4 (pre M4e) and the M8 a Computer Interface Module (CIM) or a PCI cable is required to convert the signals to RS232.

M800 / M880

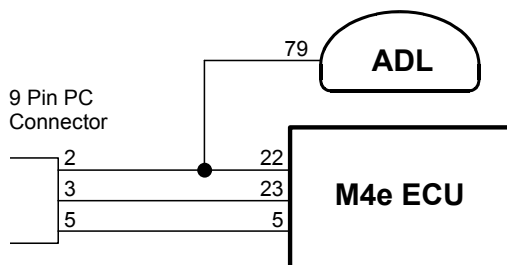


Note that the data to the ADL will be interrupted while a PC is connected (DOS software only)

Note that the 9 pin connector is not used if using the Windows Calibration software.

Note that data may be sent to the ADL via the CAN bus as an alternative to the serial connection.

M4e



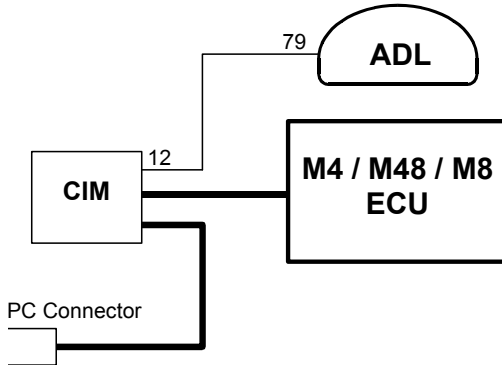
Note that Older M4 ECUs require a different connection method

Note that the data to the ADL will be interrupted while a PC is connected.

M48, M4 (pre M4e) and M8

The M48 & M8 and M4 (pre M4e) require the use of a CIM module or a PCI Cable to convert the logic level signals used by these ECU's into RS232 levels.

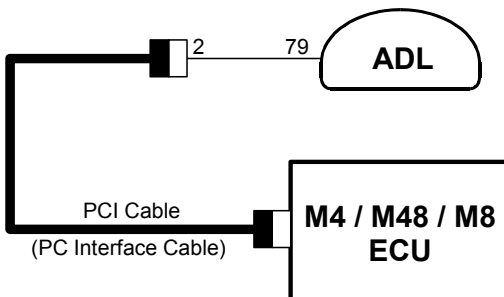
Using a CIM Module



Refer to the CIM module drawing for full wiring details.

Note that the data to the ADL will be interrupted while a PC is connected.

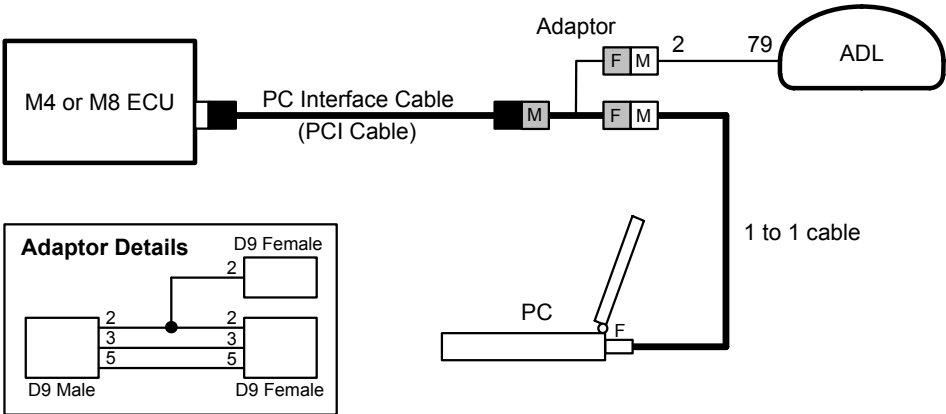
Using a PCI Cable - Direct Connection



To connect a PC to the ECU disconnect the Computer Interface Cable from the ADL and attach it to the PC.

Using a PCI Cable - Parallel Connection

This method allows the PC to be connected without disconnecting the Computer Interface Cable from the ADL.



Note that the data to the ADL will be interrupted while a PC is connected.

Appendix K: Pin List by Function

Pin	Name	Function
-----	------	----------

Battery Power

7	BAT-	Battery Negative
8	BAT+	Battery Positive

Analog Volt Inputs

45	AV1	Analog Voltage Input 1
46	AV2	Analog Voltage Input 2
47	AV3	Analog Voltage Input 3
48	AV4	Analog Voltage Input 4
49	AV5	Analog Voltage Input 5
50	AV6	Analog Voltage Input 6
19	AV7	Analog Voltage Input 7
20	AV8	Analog Voltage Input 8
21	AV9	Analog Voltage Input 9
22	AV10	Analog Voltage Input 10
23	AV11	Analog Voltage Input 11
24	AV12	Analog Voltage Input 12
25	AV13	Analog Voltage Input 13
26	AV14	Analog Voltage Input 14
1	AV15	Analog Voltage Input 15
2	AV16	Analog Voltage Input 16
3	AV17	Analog Voltage Input 17
4	AV18	Analog Voltage Input 18
5	AV19	Analog Voltage Input 19
69	AV20	Analog Voltage Input 20

Analog Temp Inputs

34	AT1	Analog Temp Input 1
35	AT2	Analog Temp Input 2
36	AT3	Analog Temp Input 3
37	AT4	Analog Temp Input 4
38	AT5	Analog Temp Input 5
39	AT6	Analog Temp Input 6

41	AT7	Analog Temp Input 7
42	AT8	Analog Temp Input 8

Lambda Inputs

29	LA1+	Lambda Input 1 Positive
30	LA1-	Lambda Input 1 Negative
31	LA2+	Lambda Input 2 Positive
32	LA2-	Lambda Input 2 Negative

Switch Inputs

57	SW1	Switch Input 1
58	SW2	Switch Input 2
59	SW3	Switch Input 3
60	SW4	Switch Input 4

Digital Inputs

52	DIG1	Digital Input 1
53	DIG2	Digital Input 2
54	DIG3	Digital Input 3
55	DIG4	Digital Input 4

Speed Inputs

63	SPD1	Speed Input 1
64	SPD2	Speed Input 2
65	SPD3	Speed Input 3
66	SPD4	Speed Input 4

Auxiliary Outputs

9	AUX1	Auxiliary Output 1
10	AUX2	Auxiliary Output 2
11	AUX3	Auxiliary Output 3
12	AUX4	Auxiliary Output 4
13	AUX5	Auxiliary Output 5
14	AUX6	Auxiliary Output 6
15	AUX7	Auxiliary Output 7

16	AUX8	Auxiliary Output 8
----	------	--------------------

8V Sensor

62	8V	Sensor 8V
----	----	-----------

5V Analog Sensor

18	5V	Sensor 5V Analog Volt & Analog Temp
28	5V	Sensor 5V Analog Volt & Analog Temp
44	5V	Sensor 5V Analog Volt & Analog Temp

0V Analog Sensor

17	0V	Sensor 0V Analog Volt & Analog Temp
27	0V	Sensor 0V Analog Volt & Analog Temp
33	0V	Sensor 0V Analog Volt & Analog Temp
40	0V	Sensor 0V Analog Volt & Analog Temp
43	0V	Sensor 0V Analog Volt & Analog Temp

0V Digital, Switch, Speed

51	0V	Sensor 0V Digital, Switch & Speed
56	0V	Sensor 0V Digital, Switch & Speed
61	0V	Sensor 0V Digital, Switch & Speed

CAN Interface

71	0V	0V CAN
72	8V	8V CAN
73	CANLA	CAN LO A (Note that 73 is internally connected to 75)
74	CANHA	CAN HI A (Note that 74 is internally connected to 76)
75	CANLB	CAN LO B
76	CANHB	CAN HI B

RS232

67	TELEM	RS232 Telemetry Output
78	TX	RS232 Output
79	RX	RS232 Input

Spare

6	Spare	Spare
68	Spare	Spare
70	Spare	Spare
77	Spare	Spare

Appendix L: Pin List by Pin Number

Pin	Name	Function
1	AV15	Analog Voltage Input 15
2	AV16	Analog Voltage Input 16
3	AV17	Analog Voltage Input 17
4	AV18	Analog Voltage Input 18
5	AV19	Analog Voltage Input 19
6	Spare	Spare
7	BAT-	Battery Negative
8	BAT+	Battery Positive
9	AUX1	Auxiliary Output 1
10	AUX2	Auxiliary Output 2
11	AUX3	Auxiliary Output 3
12	AUX4	Auxiliary Output 4
13	AUX5	Auxiliary Output 5
14	AUX6	Auxiliary Output 6
15	AUX7	Auxiliary Output 7
16	AUX8	Auxiliary Output 8
17	0V	Sensor 0V Analog Volt & Analog Temp
18	5V	Sensor 5V Analog Volt & Analog Temp
19	AV7	Analog Voltage Input 7
20	AV8	Analog Voltage Input 8
21	AV9	Analog Voltage Input 9
22	AV10	Analog Voltage Input 10
23	AV11	Analog Voltage Input 11
24	AV12	Analog Voltage Input 12
25	AV13	Analog Voltage Input 13
26	AV14	Analog Voltage Input 14
27	0V	Sensor 0V Analog Volt & Analog Temp
28	5V	Sensor 5V Analog Volt & Analog Temp
29	LA1+	Lambda Input 1 Positive
30	LA1-	Lambda Input 1 Negative
31	LA2+	Lambda Input 2 Positive
32	LA2-	Lambda Input 2 Negative
33	0V	Sensor 0V Analog Volt & Analog Temp
34	AT1	Analog Temp Input 1
35	AT2	Analog Temp Input 2
36	AT3	Analog Temp Input 3
37	AT4	Analog Temp Input 4
38	AT5	Analog Temp Input 5
39	AT6	Analog Temp Input 6
40	0V	Sensor 0V Analog Volt & Analog Temp
41	AT7	Analog Temp Input 7
42	AT8	Analog Temp Input 8
43	0V	Sensor 0V Analog Volt & Analog Temp
44	5V	Sensor 5V Analog Volt & Analog Temp

45	AV1	Analog Voltage Input 1
46	AV2	Analog Voltage Input 2
47	AV3	Analog Voltage Input 3
48	AV4	Analog Voltage Input 4
49	AV5	Analog Voltage Input 5
50	AV6	Analog Voltage Input 6
51	0V	Sensor 0V Digital, Switch, Speed
52	DIG1	Digital Input 1
53	DIG2	Digital Input 2
54	DIG3	Digital Input 3
55	DIG4	Digital Input 4
56	0V	Sensor 0V Digital, Switch, Speed
57	SW1	Switch Input 1
58	SW2	Switch Input 2
59	SW3	Switch Input 3
60	SW4	Switch Input 4
61	0V	Sensor 0V Digital, Switch, Speed
62	8V	Sensor 8V
63	SPD1	Speed Input 1
64	SPD2	Speed Input 2
65	SPD3	Speed Input 3
66	SPD4	Speed Input 4
67	TELEM	RS232 Telemetry Output
68	Spare	Spare
69	AV20	Analog Voltage Input 20
70	Spare	Spare
71	0V	0V CAN
72	8V	8V CAN
73	CANLA	CAN Lo A (Note that 73 is internally connected to 75)
74	CANHA	CAN Hi A (Note that 74 is internally connected to 76)
75	CANLB	CAN Lo B
76	CANHB	CAN Hi B
77	Spare	Spare
78	TX	RS232 Output
79	RX	RS232 Input

Appendix M: Connector

ADL Mating Connector

Deutsch : AS6-20-35SN

Wire

Wire to suit connector : 22# Tefzel, Mil Spec : M22759/16-22

Crimp Tool

Crimp Tool : M22520/2-01

Positioner for Crimp Tool : M22520/2-07

- Note that the Crimp Contacts are type 22D (needed to set the crimp tool correctly)

Wire Stripping Tool

The following tool is recommended

Ideal Industries 45-2133 stripping tool with LB1195 wire stop.

Heatshrink Boots

Straight : Racychem 202K153, Hellermann 156-42-G

Right Angle : Racychem 222K153, Hellermann : 1156-4-G

Appendix N: Wire Specifications

M22759/16 Wire Ratings (For Various Wire Gauges)

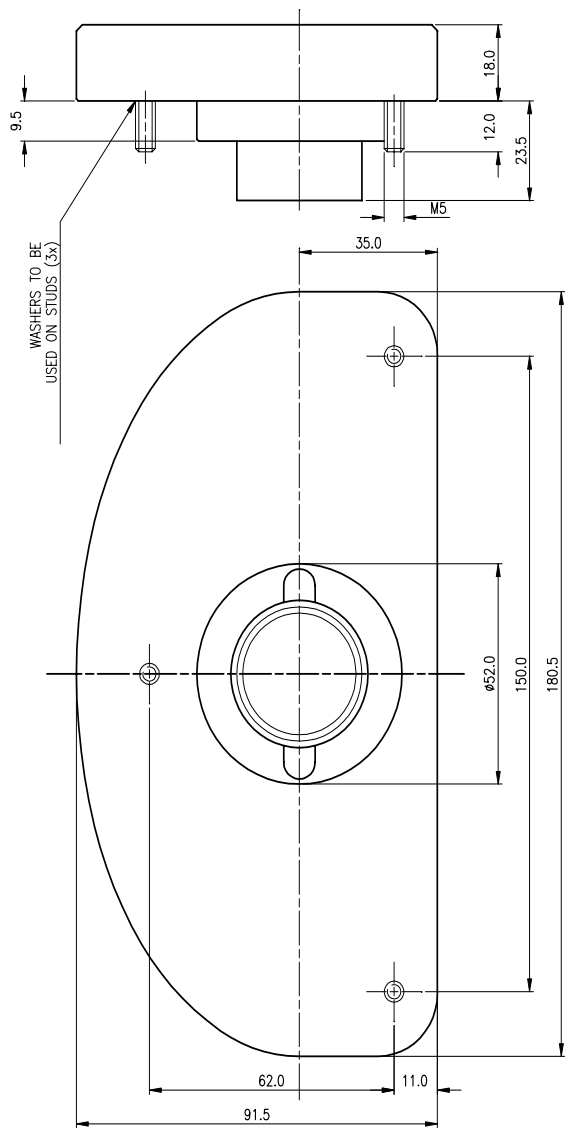
Insulation Material : Tefzel
Conductor : Tin Plated Copper
Voltage Rating : 600 V
Maximum Temperature : 150 °C

Wire Gauge (AWG)	Cross Sectional Area (mm ²)	Max Current at 100 °C Ambient (Amps)	Resistance (ohm / m)	Resistance (ohm / 1000 ft)
22	0.38	5	0.045	14
20	0.61	6	0.028	8.5
18	0.96	9	0.018	5.5
16	1.2	12	0.014	4.3
14	1.9	18	0.009	2.7
12	3.0	24	0.006	1.8

Wire Stripping Tool

The following tool is recommended
Ideal Industries 45-2133 stripping tool with LB1195 wire stop.

Appendix P: Case Dimensions



NOTE:
1. ENSURE PRODUCT IS NOT STRESSED WHEN MOUNTED
2. DIMENSIONS INDICATE ACTUAL PRODUCT SIZE ALLOW FOR CLEARANCE WHEN MOUNTING.

